

Sessions & Activities

East
Family
HUBs

✿ Breast Start

A friendly and relaxed environment that gives an opportunity to meet other mums, share experiences and build your confidence to breastfeed with support from peer supporters and a trained Health Promotion Practitioner. **You can attend this group if you are currently pregnant.**

✿ Infant Massage (From 6 Weeks)

You will be invited to book onto these sessions by your Health Visitor - You will learn gentle massage techniques with your baby, which will support bonding and attachment, improve baby's skin and sleep, aid digestion and help reduce colic. **Call the Health team for more information on 0300 021 8997.**

✿ LIGHT Peer Support Group

Light is a pre and post-natal peer support group providing support around emotional wellbeing and mental health of mums and their families. **For more information please call 01144 388962.**

✿ Other Services and Support

You can also access information and support around **volunteering, counselling services**, how to join our parent groups or become a **parent champion**, access **wider feeding support** and much more. for more information about each of these, visit www.doncaster.gov.uk/familyhubs.

Don't forget to follow us on Facebook for all the latest updates! Just search for your local family hub!



Our venues:

Stainforth Family Hub

Junction Road, Stainforth,
DN7 5DH
01302 734048

Armthorpe Family Hub

Mere Lane, Armthorpe,
DN3 2DG
01302 736760

Moorends Family Hub

Marshland Road, Moorends,
DN8 4SB
01302 737470

Become a member at
your local Family Hub!

For more information, visit:
DONCASTER.GOV.UK/FAMILYHUBS

East
Family
HUBs



East Family Hubs

May Half Term Timetable 2025

26th May - 30th May

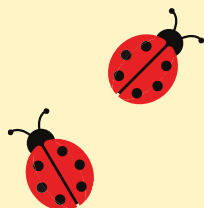
Discover the sessions, activities,
support and events taking place for families of
children aged 0-5 and beyond!

Other community
venues we deliver at:

St Nicholas Church Hall

Stonegate, Thorne, DN8 5NP

We can't wait
to see you!



Join us at:

Stainforth Family Hub

Moorends Family Hub

Armthorpe Family Hub

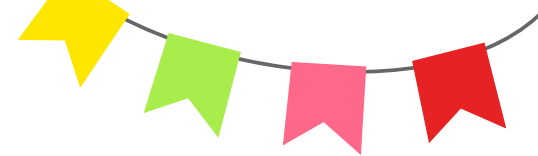


Proudly supporting families in East Doncaster including:

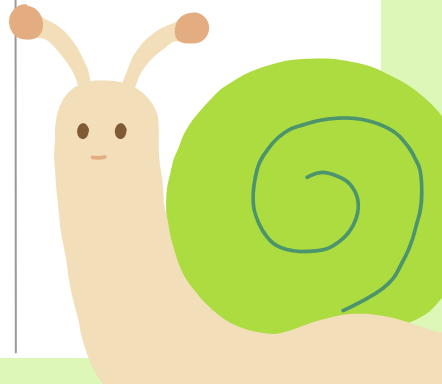
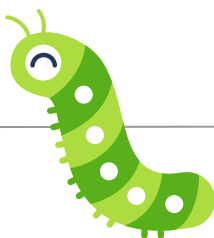
Stainforth • Armthorpe • Thorne • Moorends • Hatfield • Hatfield Woodhouse •
Kirk Sandall • Edenthorpe • Dunsville • Dunscroft • Barnby Dun • Fishlake •

www.yourlifedoncaster.co.uk/family-hubs

May Half Term Timetable



	Mondays	Tuesdays	Wednesdays	Thursdays	Fridays
Stainforth	Bank Holiday	Forest School 10:30am-11:30am Tuneful Chatter 1:30pm-2:30pm		First Friends 9:30am-11am Infant Massage 1pm-2pm (Invite via Health Team)	Remake Learning - Imagination Gaming 10:30am-3pm *Booking is essential, please scan the QR code
Armthorpe	Bank Holiday		Family Fun 9:30am-11am	Breast Start 1:30pm-3pm	Infant Massage 1pm-2pm (Invite via Health Team)
Moorends	Bank Holiday		First Friends 9:30am-11am	Wriggle Rhyme & Story 10am-11am LIGHT Peer Support 1pm-2pm	Infant Massage 1pm-2:30pm (Invite via Health Team)
Other venues	Scan the QR code to find out more about the Holidays Activities and Food programme (HAF) in your area.	All of our sessions are Dad/Male carer friendly		First Friends 1pm-2:30pm St Nicholas Church Hall, Thorne	



Sessions & Activities



East
Family
HUBs

✿ First Friends (Pre-Birth to Pre-Crawling)

Come and play together within a safe, informative and stimulating environment, which is welcoming and supportive to all. Health and development advice from a trained Nursery Nurse is available.

You can attend this group if you are currently pregnant.



✿ Forest School (Walking to School Age)

Forest school provides children with the opportunity to explore and learn in the natural environment. Investigating wildlife, plants, and trees of the local woodlands, through fun and interactive activities, such as bug hunting, den building, Hapa zomeing and more.

✿ Tuneful Chatter (All ages welcome)

Take part in playful arts activities with Tuneful Chatter! Here, your children will have fun with experienced artists exploring music, dance, and drama activities. This activity is part of Tuneful Chatter, funded by Arts Council England Place Partnerships and Doncaster Council, and led by darts, Cast and City of Doncaster Council's Early Years Intervention and Prevention Service.

✿ Family Fun

Dig, stay and play at our sand-tastic family fun session and become Mini Beach explorers, with buckets, spades and sandy toes. Join us for a splash, paddle and play this half-term and even a mini treasure hunt in the sand with ball games and kite-making too.

✿ Wriggle, Rhyme & Story Time (0-5)

Come along and enjoy our fun and interactive session where children can explore music and rhymes with their parent/carer using our props and sensory resources. Join in with a range of activities that can be easily completed in the family home and enjoy sharing story time led by our Early Years Development Workers.

